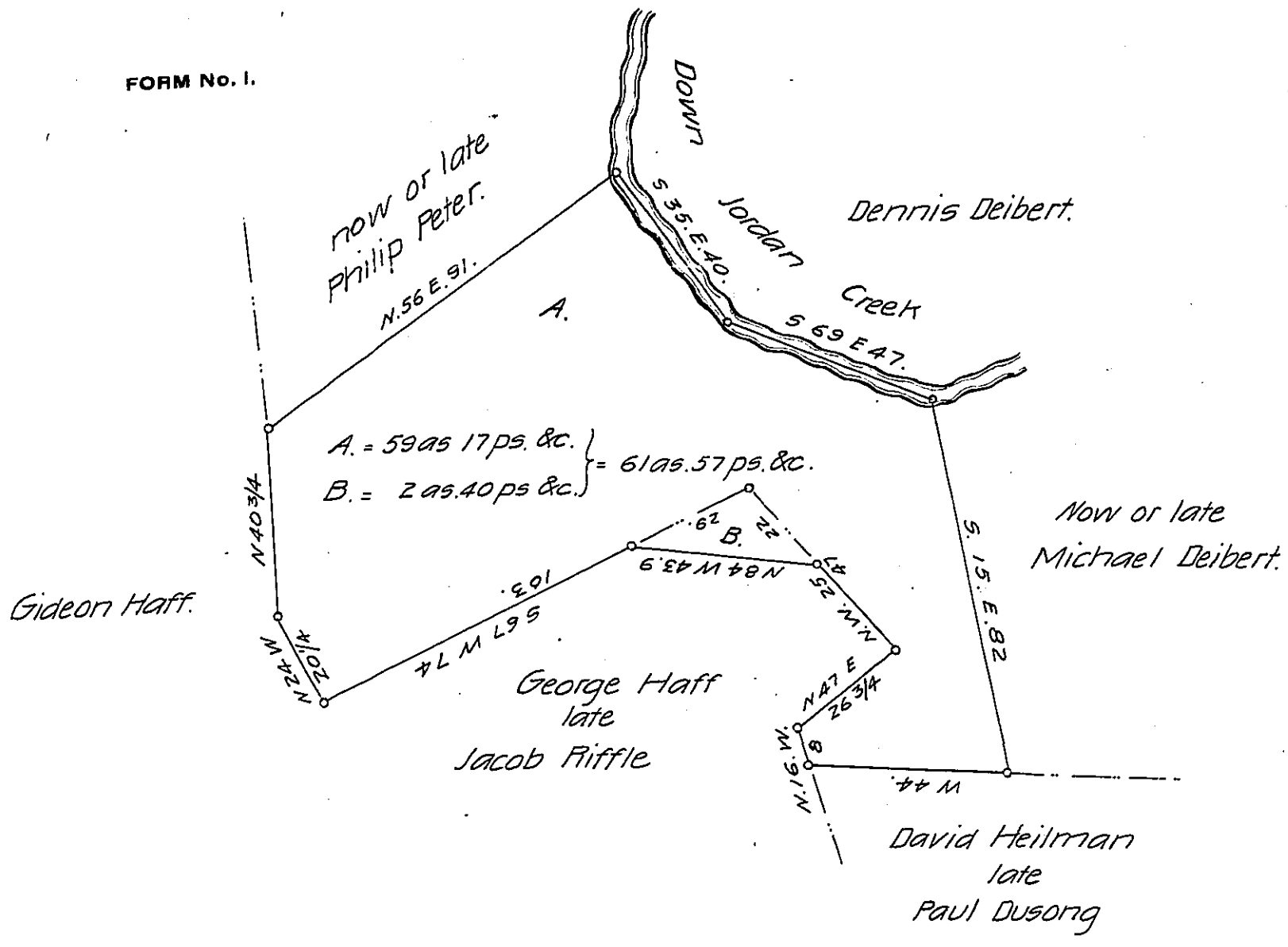


FORM No. 1.



Draft of a tract of land situate in Lowhill township, Lehigh County, containing 61 as .57 ps and allowance of six per cent. for roads &c. 59 as 17 ps. & allowance surveyed by Geo. S. Eisenhart, D.S. on the 21st day of May A.D. 1814 to George Oldwine by Wt. 2d Nov. 1758, and 2 as 40 ps. &c. part of 134 as. 50 ps. &c. surveyed to Jacob Riffle by Warrant dated 3 June A.D. 1746. The above now returned for Gideon Haff, Reuben Deibert Dennis Deibert & David Heilman.

Geo. Blank C.S.

To F. B. Beath Esq  
Suyer General.

IN TESTIMONY that the above is a copy of the original remaining on file in the Department of Internal Affairs of Pennsylvania, made conformably to an Act of Assembly approved the 16th day of February, 1833, I have hereunto set my Hand and caused the Seal of said Department to be affixed at Harrisburg, this twenty-sixth day of JUNE 1906.

*Laac R. Brown*  
 Secretary of Internal Affairs.